

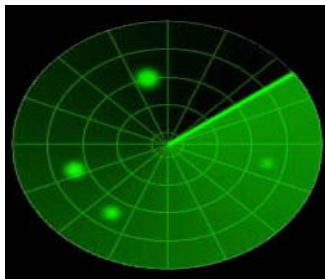
# Coordinated Response to Children Exposed to D.V.

building safety through communication  
and coordination

**Maureen Reid, Program Manager, London Children's Aid  
Society**

# The Beginning....

Domestic death review committee finding  
“each agency had the family on their  
radar screen, if they had pooled their  
information it would have created a big  
blip on the screen”



# Guiding Principles of the Model

- The protection of children is the highest priority
- Children's safety and well-being can be enhanced by increasing their mother's safety
- Children's safety is increased by supporting the autonomy of the mother
- The person responsible for the harm, not the person harmed, is held accountable for the abusive behaviour
- Community service providers have a responsibility to provide direct services and support education and treatment services for abusive adult partners.



# Service Coordination Is Meant To Produce

- Enhanced safety planning with the family
- Transparent, consistent sharing of information between community partners in collaboration with the family
- Joint case planning and shared responsibility for the forward momentum of the plan
- Assessment of risk from multiple systems



# How To Initiate a Conference

- Identifying red flags through standardized risk assessment and/or safety planning
- Clinical judgment regarding the potential and/or increasing risk



# Examples of the Cases Reviewed for Safety Planning

- Safety planning at the eve of a child welfare trial to stop access to father
- S.p.- woman ready to leave an increasingly violent relationship with a member of the Hell's Angels
- S.p.- woman in a relationship with a man just released from penitentiary and pursuing both her and their son



# Examples of the Services/Professionals Involved

- CAS- social worker, access supervisor, kinship care program, legal department
- Police-d.v. specialists, biker enforcement unit,
- Woman's Advocate- Shelter staff, community based counselor, outreach worker,
- School personnel- principal, v.p.
- Researcher/psychologist/ d.v.expert
- Pediatric child abuse expert
- C.A.W. woman's advocate
- Probation and Parole- high risk case manager
- Counselor specializing in domestic violence treatment for men
- Woman's advocate within the the P.A.R. program
- Child's therapist
- Psychiatrist- trauma expert



# Also Included

- Woman victim
  - Family members
  - Friends of the woman
  - Family of the man who is abusing
- 
- Each case is different and we have held safety planning conferences with the male partner



# Other Issues

- Consents are signed to share information
- If no consent from male partner ?
- Woman decides who she wants to bring as a support



# Expert Opinion Conferences

- Two conferences
- Wanting to get advice and direction
- Client signed the consent for everyone attending to hear the CAS information
- The focus was not safety planning with the woman but case direction



# Feedback

- Very positive from clients involved
- Enhanced their sense of safety
- Appreciated the time professionals took to discuss safety plans
- Appreciated that we went at her pace
- Appreciated the coordination of services and not having to meet with everyone separately



# Feedback

- Professionals felt the conferences address the stress of accountability that comes from safety planning in isolation
- Appreciated the opportunity to mobilize supports for the woman
- Appreciated the opportunity to have input into the safety plan
- Felt the safety plan was better communicated and valuable



# Benefits

- Greater awareness of the dynamic risk issues
- Worked in a strength-based manner
- More effort to engage men in the safety planning
- Enhanced the front-line coordination of service and their knowledge of



# M.A.G. Grant

Outlines the background and process undertaken to develop the high risk case conferencing protocol

full report available by emailing [mreid@caslondon.on.ca](mailto:mreid@caslondon.on.ca)